



AJ's TEXTURE GALLERY DESCRIPTION

Revised: 10/16/2023

AJ's Texture Gallery is in the Milda Region on the south side of Route-8. All full permission textures are located there. Casper Texture Vendors are the main vendors for textures individually or as a group. Prepackaged groups of textures are available from standard vendors and the SL MP.

PLEASE NOTE: Public and group discounts are only on inworld vendors.

The Levels

There are seven (7) floors to the gallery. The first floor is the street level. There are two levels below, Floor-0 and Office. The floors above are Floors-2, Floor-3, Floor4, and Roof. There is a display at each floors TP Pad. It has the pricing scheme for the vendors and quantities in them, a light switch for the floor, a vendor content sign, and a floor number sign above. Touching either of the signs will give you a notecard or URL link.



Touch the floor sign for the floors listing. The Price Sign will give a notecard of the prices seen there. The Vendor Content sign will open a menu with URLs for textures vendors sorted by the Walkways and areas.

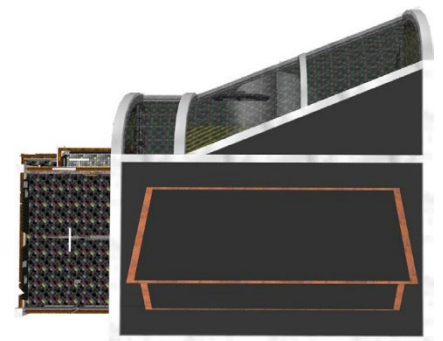
This is a warehouse of the majority of base, modified, and end textures. It gets added to a lot when I am working on something. There's generally a marked area for new unsorted textures that gather the projects collections. At some point, I sort these into the applicable areas in the gallery.



I adjust the areas and floors as things grow.

There is an online status board at the entrance and a tour HUD for the Gallery.

The site hosts the LGH Gold Hunt game, so you might find some coins and gems laying around.



SL to RL Link

The Texture Gallery has web browsers near the texture vendors. Most will link to Spoonflower pages with matching fabrics and textiles.

FYI: a **textile** is a raw material that has nothing done to it yet. Like six yards of punky rooster satin for a robe. **Fabric** is a textile that has been processed in some way for other uses.



Spoonflower has both raw materials by the yard and finished home décor goods. They also offer wallpaper in a few different varieties.

Spoonflower provides prints of my textures on a wide variety of fabrics. Order their sample pack of materials for a nice set of squares with color dots. You can order samples of printed textiles as Swatches (8"x8"), Fat Quarters (21"x18"), and a full yard.

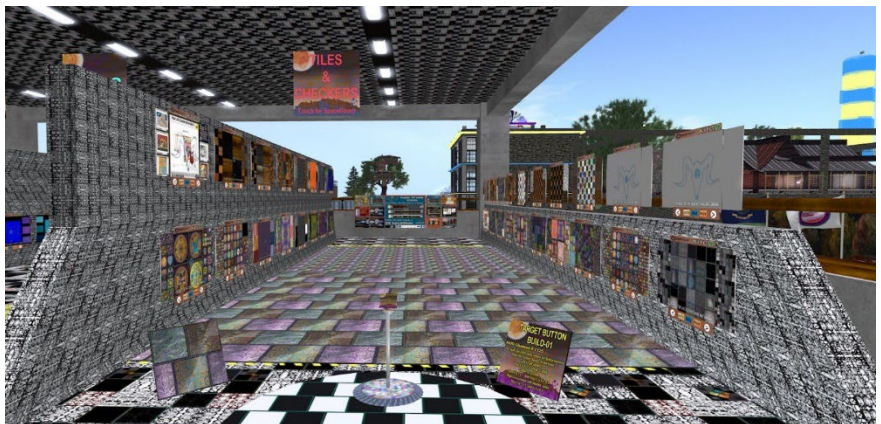


There are signs for the areas hanging from the ceiling. I'm still setting a lot of demos up, but each area has the following.

- A set of texture vendors for singles and sets of textures,
- One or more standard vendors with prepackaged textures.
- A demo rezzer pedestal for one or more types of texture targets. The rez zone is marked by yellow stripes.
- A standard vendor with free HUDs to work with the demo targets.
- Web browsers with pages to RL products or collect of products.

The Tiles & Checkers Isle has its rezzer pedestal in the middle and the target floor in front. The panels on the ground identify the target name and HUDs to use on the right. The left panel shows the 1x1 sample of the texture being applied to the target.

The coffee area has a cup demo. The HUD lets you choose the cup and face to apply textures to. The sign behind the cups is shown to the right.



TEXTURE SERVERS

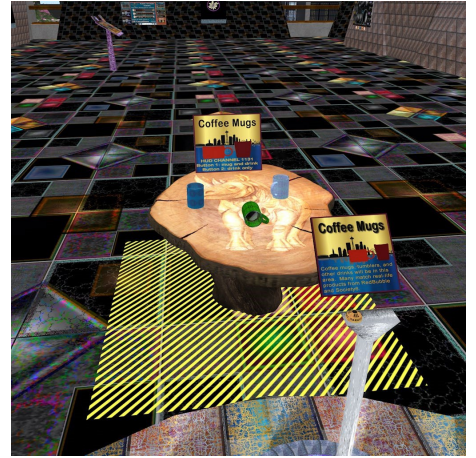
HUD textures are called from a set of servers. The same textures may be available on different HUDs for different targets. This is the same process for clothing and objects that use a HUD for textures.

SECOND LIFE PERMISSIONS

Full Permissions.

This allows the purchaser to download to their computer for work and modifications, then for uploading for personal or business use. FP normal use allows for the following.

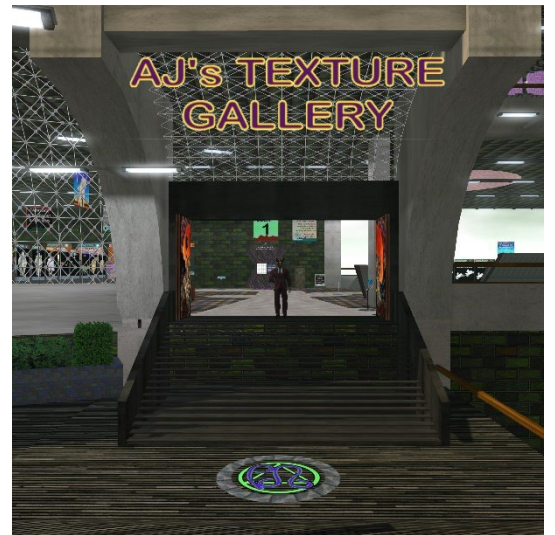
- Download it to your computer.
- Modifications for use in your textures for upload to Second Life.
- Use and modification for use as screensavers on your personal devices (cell phone, tablet, laptop, or desktop)
- NOT ALLOWED: use in any real world or real-life products in their default or modified forms.
- NOT ALLOWED: transfer to another person, business, or entity in its default forms.



TEXTURES & OTHER PRODUCTS

Clothing and other objects that are sold across the street at TCGWS and remote stores elsewhere use textures from the gallery for their patterns. Should you want any of the products sold at TCGWS with any of the textures at AJTG, just drop me a notecard in my Status Box.

Use the Texture Vendor Content Listing to get the name of the texture or textures you wanted used. Catalogs and Scrapbooks will show an image and the name of textures.



TENANT AND ON-SITE BEHAVIOR

- This is a moderate area. No adult activities.
- No grieving, bashing or hateful activities allowed.
- Flying is restricted from the ground to 150 meters by gaming orbs.
- Everyone is considered a responsible adult and treated as such regardless of avatar form.
- Age restrictions may apply.
- Voice is allowed for everyone and between sections and other parcels. Please manage your voice controls and language accordingly.

PRIMARY DOCUMENTS LINKS

<https://thunderchild.net/SL/doc/TCGWS-DocPrimeLinks.pdf>