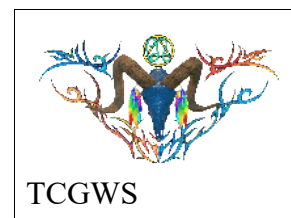


Box,RudeBiker,Set2-PatchCaution,DangerousRider

Rude Biker Patch Set 2

07/26/21

Thank you for your interest and support!



This is a texture pair with three images per textures. Both have the same message but one has a chain boarder and the other has no boarders. Each texture has three images, one as is (straight or squared) and one skewed left and one skewed right.

COPY, MODIFY, NO TRANSFER.

You have copy and modify permissions for all the textures in the package. Textures only sets are for personal use and not resale, therefore the low price. The textures can be copied in the inventory, copied onto object faces and they can be called by objects using the UUID from your inventory. Objects with these permissions can be copied and modified directly with the edit tools. If you loose your items, both the SL Marketplace and CasperVend systems can redeliver your purchase.

The Images Patches Set are Public Domain images from the Internet that I've taken time to download, edited, packaged and uploaded at my costs for retail in Second Life. That's one reason for low price, but it pays for means and only encourages me. ;-) As of this production, I'm recovering from a car pulling in-front of me on my Yamaha Raider 1900cc....Purchase for Empathy or Sympathy.

Refer to the Second Life Terms of Service <https://www.lindenlab.com/legal/second-life-terms-and-conditions>

FEATURES

- Pair of texture Image
- One texture has Chain boarders
- One texture has No boarders
- Modify and Copy
- Skewed and non-skewed images for fitting to patches

UNPACKING CASPERVEND

CasperVend items come in a box and will probably show up in your Objects Folder. You'll need to rez the box and open it to copy to your inventory.

UNPACKING SL MARKETPLACE

Markerplace purchases most likely will not be boxed and can be viewed in the contents tab on the product page. Those items will go to your Received Items Folder in your Inventory. Items with no copy permissions, will move in and out of inventory as you rez them and take them back.

Rude Biker Set 2 Texture for Patches



Two Single Textures
COPY MOD

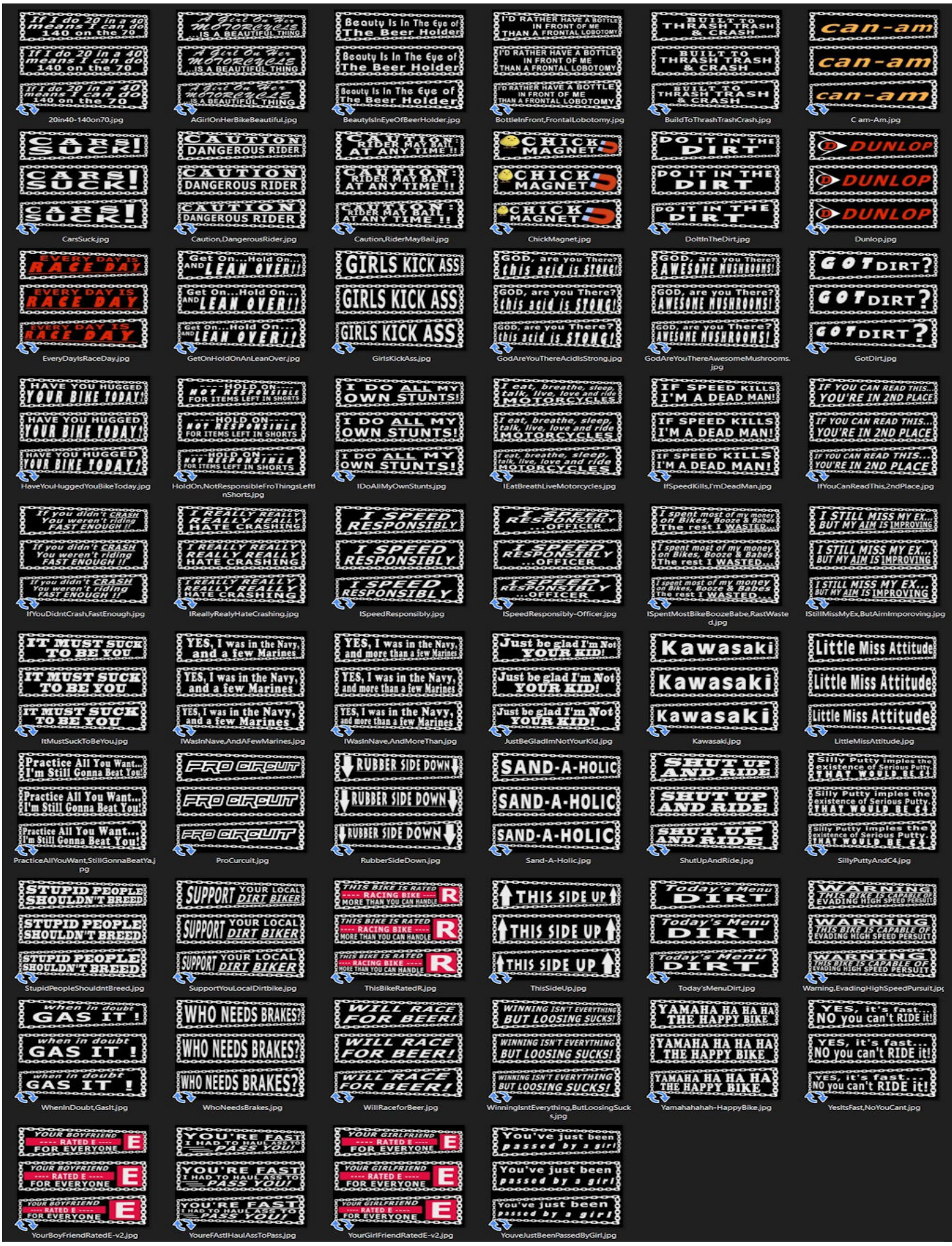
INFORMATION

These are quick patches from the Public Domain. I plan to create my own version of these patches later. Those will be available in SL and RL outlets.

AVAILABILITY

These products are available in Second Life (SL). Some messages are available in real life on various products at Redbubble.com and society6.com. Contact me if you have a phrase that you'd like on a patch. This set includes 102 images show below.

The full set is shown on the last two pages.



If I do 20 in a 40 means I can do 140 on the 70

Get On Her Bike Beautiful

Beauty Is In The Eye of The Beer Holder

I'D RATHER HAVE A BOTTLE IN FRONT OF ME THAN A FRONTAL LOBOTOMY

BUILT TO THRASH TRASH & CRASH

can-am

CARS SUCK!

CAUTION DANGEROUS RIDER

CAUTION RIDER MAY PANIC AT ANY TIME !!

CHICK MAGNET

POIT IN THE DIRT

DUNLOP

EVERY DAY IS RACE DAY

Get On...Hold On...AND LEAN OVER!!

GIRLS KICK ASS

GOD, are you There? THIS acid is STRONG!

GOD, are you There? AWESOME MUSHROOMS!

GOTDIRT?

HAVE YOU HUGGED YOUR BIKE TODAY?

HOLD ON...NOT RESPONSIBLE FOR ITEMS LEFT IN SHORTS

I DO ALL MY OWN STUNTS!

I eat, breathe, sleep, talk, live, love and ride MOTORCYCLES

IF SPEED KILLS I'M A DEAD MAN!

IF YOU CAN READ THIS... YOU'RE IN 2ND PLACE

If you didn't CRASH You weren't riding FAST ENOUGH !!

I REALLY REALLY REALLY HATE CRASHING

I SPEED RESPONSIBLY

I SPEED RESPONSIBLY...OFFICER

I spent most of my money on Bikes, Boozes & Babes The rest I WASTED

I STILL MISS MY EX... BUT MY AIM IS IMPROVING

IT MUST SUCK TO BE YOU

YES, I was in the Navy, and a few Marines

YES, I was in the Navy, and more than a few Marines

Just be glad I'm Not YOUR KID!

Kawasaki

Little Miss Attitude

Practice All You Want... I'm Still Gonna Beat You

PRO CURCUIT

RUBBER SIDE DOWN

SAND-A-HOLIC

SHUT UP AND RIDE

Silly Putty implies the existence of Serious Putty THAT WOULD BE C4

STUPID PEOPLE SHOULDN'T BREED

SUPPORT YOUR LOCAL DIRT BIKER

THIS BIKE IS RATED MORE THAN YOU CAN HANDLE

THIS SIDE UP

Today's Menu DIRT

WARNING THIS BIKE IS CAPABLE OF EVADING HIGH SPEED PURSUIT

When in doubt GAS IT !

WHO NEEDS BRAKES?

WILL RACE FOR BEER!

WINNING ISN'T EVERYTHING BUT LOOSING SUCKS!

YAMAHA HA HA HA THE HAPPY BIKE

YES, it's fast... NO you can't RIDE it!

YOUR BOYFRIEND RATED E FOR EVERYONE

YOU'RE FAST I HAD TO HAIL A TAXI TO PASS YOU!

YOUR GIRLFRIEND RATED E FOR EVERYONE

You've just been passed by a girl

YOUR BOYFRIEND RATED E FOR EVERYONE

YOU'RE FAST I HAD TO HAIL A TAXI TO PASS YOU!

YOUR GIRLFRIEND RATED E FOR EVERYONE

You've just been passed by a girl

