



NOTE:

THE PERMISSIONS FOR CLOTHING OBJECTS ARE COPY ONLY.
The product comes available for the following models.

Classic Models (XL, L, M S, XS) Belleza (Freya, Isis, Venus) Model M,
Maitreya, Ocacin (Ocacin, Voluptuous), Slink (Hourglass, Physique) Tonic
(Curvy, Fine).

The NASA public library is the source of all the stellar images used in this set.

FEATURES

- Background images from NASA Library
- Pictured Space Station Fighting KOCK from Triasm at 3,900 meters
- Additional HUDs for clothing textures available.
- Matching Real Life clothing at online stores.

HUD & USE

The HUD system I use is by Creative Designs. The HUD and clothing work on a channel number, Similar clothing lines will have the same channel number. All Women's Oversized T-Shirts by White Canvas with the SKU **ovrsztsht,wc1** are on the same channel and can be used with all the sets of HUDs for this shirt. The HUD provides control for color tinting, shininess, glow, alpha, texture and bright for the clothing.

Once you've added the clothing to what you are wearing, double click on the HUD to attach it to the screen. You can move it around using the editing tools. Hit the open/close button to close and reopen it so the scripts have all reset.

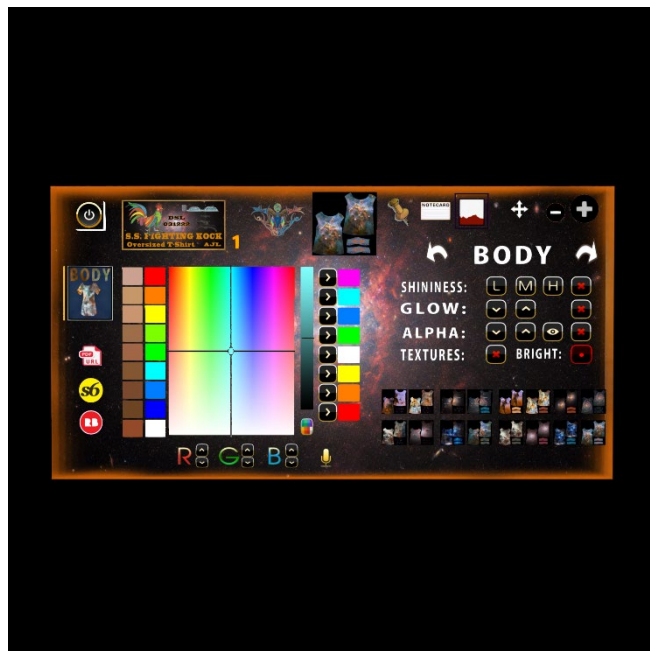
You will need to touch the select the shirt button and then touch the select texture button. This ensures the clothing is selected.

You can now play with the other sections. The Color tinting will apply a color to the clothing. The sizing buttons will change the overall size of the clothing to a certain degree. The eye on the Alpha row, will make the clothing transparent. The Red Xs will cancel any one of the alterations.

The Info & RL Links provide information and landmarks for inworld sites. The HUD label will open the SL Marketplace page and the URL PDF will open the current PDF file from SL.Thunderchild.net.

HOLOVEND VIEW

You can see this item inworld at the Suns Deck HoloVend areas at TCGWS in Milda. Suns Deck:
<http://maps.secondlife.com/secondlife/Milda/183/218/55>. Additional HUDs can be rezzed with clothing items and tested. You can even wear your shirt and test other HUDs for textures you like.



TOS

TCGWS TOS: <https://thunderchild.net/SL/doc/TCGWS-TOS.pdf>

Second Life Terms of Service <https://www.lindenlab.com/legal/second-life-terms-and-conditions>

UNPACKING

CasperVend items come in a box and will probably show up in your Objects Folder. You'll need to rez or wear the delivery box for it to open it and copy to your inventory. The Machine box provided by CasperVend is also delivered by SL Marketplace. It will go to your Received Items Folder in your Inventory.

ADDITIONAL INFORMATION

The TCGWS project homepage is <http://sl.thunderchild.net>. Artist's homepage is <http://thunderchild.net>. Grab the free product "Business & Artist Information" from the SL MP or CasperVend in-World. Contact AJ Leibengeist aka Thunderchild Allen inworld for questions or issues.

AVAILABILITY

Matching and similar Real-Life products are provided by on-line third-party on-demand companies. There are several matching and similar products for RL. If there is a product from my SL shops that you'd like to have in Real Life, Let me know!

Stores include RedBubble.com, Society6.com, SpoonFlower.com, TeePublic

