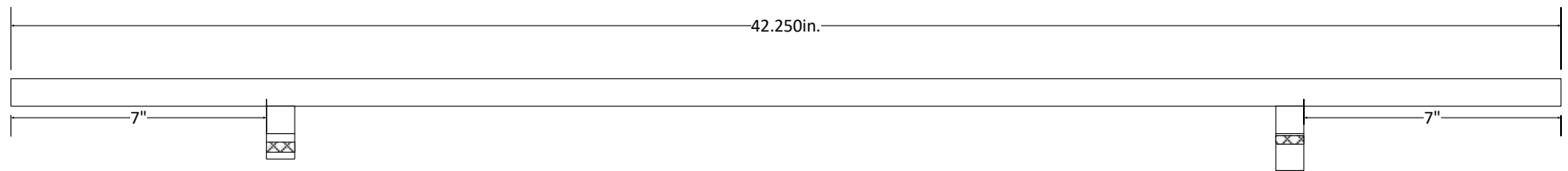
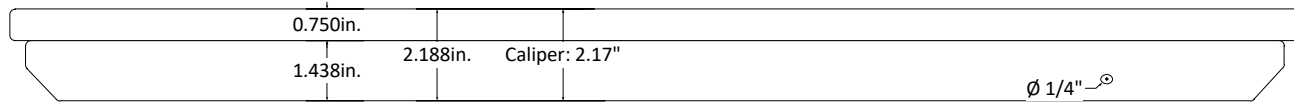


Original Table Top & Measurements

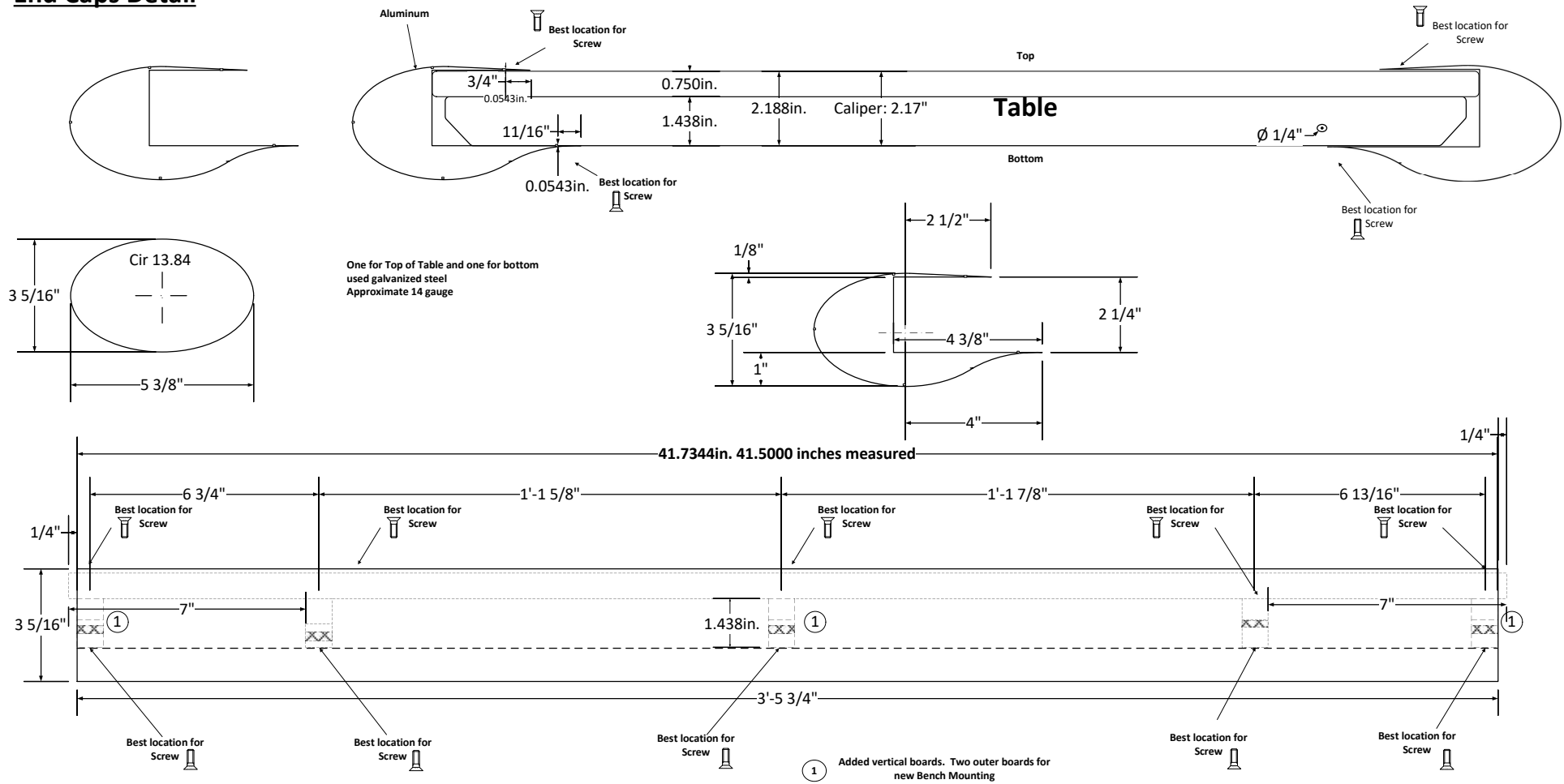


Draft Table Oval End Caps

REVISED	FILENAME	PAGE
7/6/2018	DRAFTTABLEMODS-2018.VSD	1 OF 6
DRAWN BY		Sheet
ALEXANDER JOHANN LEIBENGEIST		Table Top

Aluminum roll edge pieces for top and bottom of drafting board to allow rolling use of large paper (38" x 50"). Added Vertical backboards for mounting and additional attachment locations for Edge Pieces.

End Caps Detail



Draft Table Oval End Caps

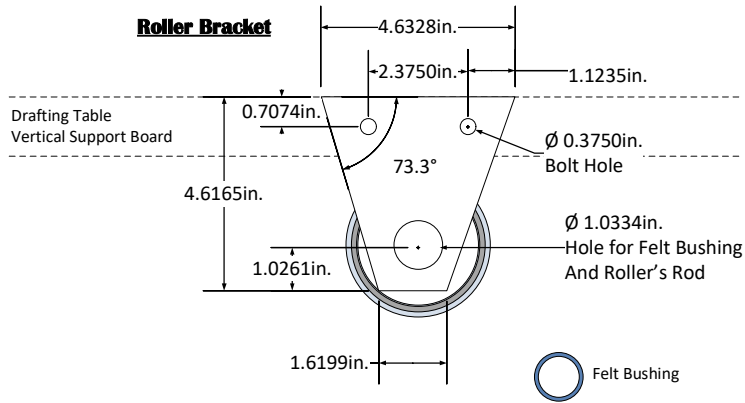
REVISED	FILENAME	PAGE
7/6/2018	DRAFTTABLEMODS-2018.VSD	2 OF 6
DRAWN BY	Sheet	
ALEXANDER JOHANN LEIBENGEIST	End Caps	

Aluminum roll edge pieces for top and bottom of drafting board to allow rolling use of large paper (38" x 50"). Added Vertical backboards for mounting and additional attachment locations for Edge Pieces.

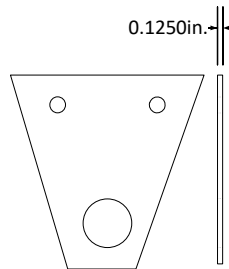
Total Fab cost of two caps: \$65
Weld Rite Mechanical

Rollers & Support Brackets

Roller Bracket

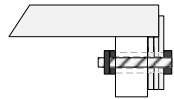


Roller Bracket Pattern



Total of Eight (8) Braces, two per roller. Material should be 1/8" (+/- 1/32) to allow a 1/8" wide felt ring to be cemented in the Roller Rod hole.

Side View with Pivot Point Connected to Table Section

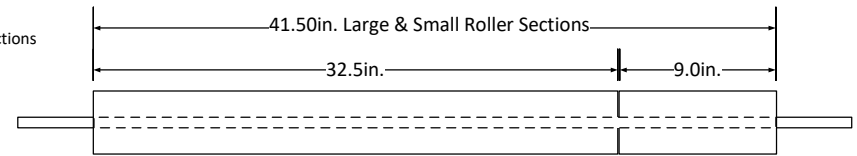


The 1/4" bolts pass through the Pivot Point Bracket and the vertical brace on the table. Secures with either lock washers and nuts or double nutted.

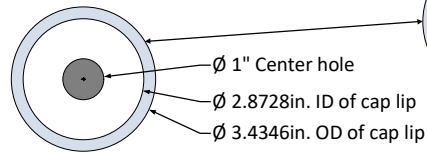
Rollers

- (C) End for belt connections
- (D) Belt Wheel
- (B) & (I) Rollers

Rollers Front View



Plastic End Cap



Hard Paper Roller

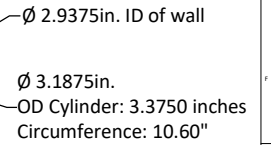
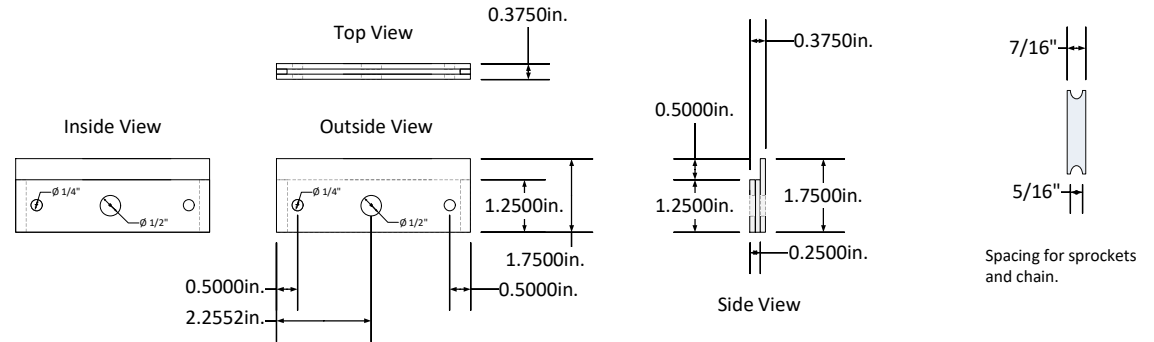


Table Pivot Point & Connection for Support

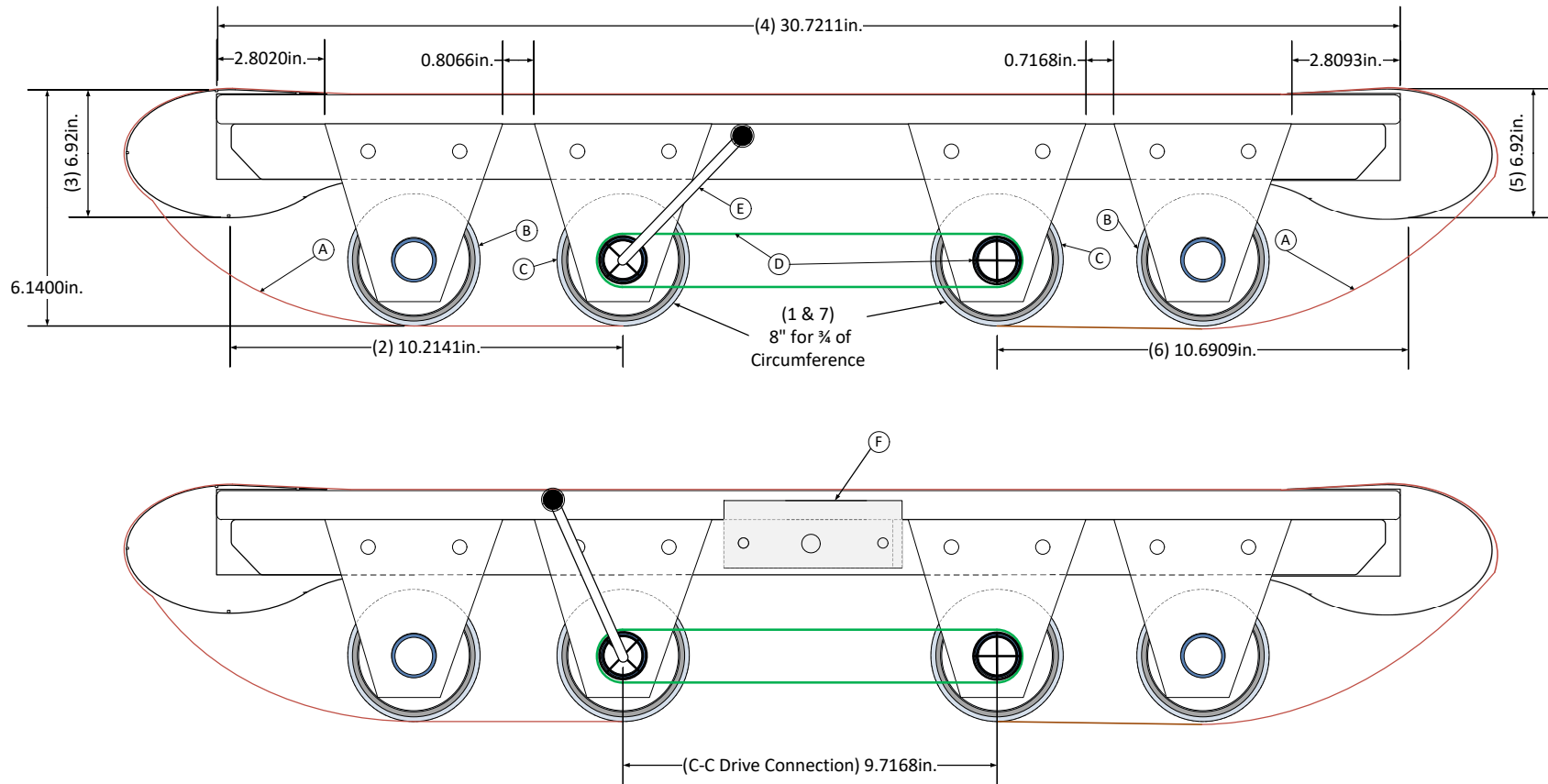


Draft Table Oval End Caps

The side view detail of the brackets, pivot point and the rollers.

REVISED	FILE NAME	PAGE
7/6/2018	DRAFTTABLEMODS-2018.VSD	3 OF 6
DRAWN BY		Sheet
ALEXANDER JOHANN LEIBENGEIST		Rollers & Braces

Rollers & Brackets Side View



**NOTE: PICTURE DOES NOT
touch Rollers.**

- (A) Drawing Belt. 40" – 41.5" wide, 92" long, cut to fit (85" +/-0.01%). Ends attaches to Spindles. Drawing paper attaches to Drawing Belt. Measurement Points (1,2,...). Specs: Clear Marine Vinyl - Flexa: 30 - 40 Gauge.
- (B) Roller for Drawing Belt and paper to travel on.
- (C) Roller for Drawing Belt to wrap around for uptake of belting.

- (D) Small Chain and Sprocket set to link inner Rollers.
- (E) Hand crack to attaches to Spindle axel for rolling Drawing belt up and down.
- (F) Table Pivot Point & Connection for Support

AJ Leibengeist

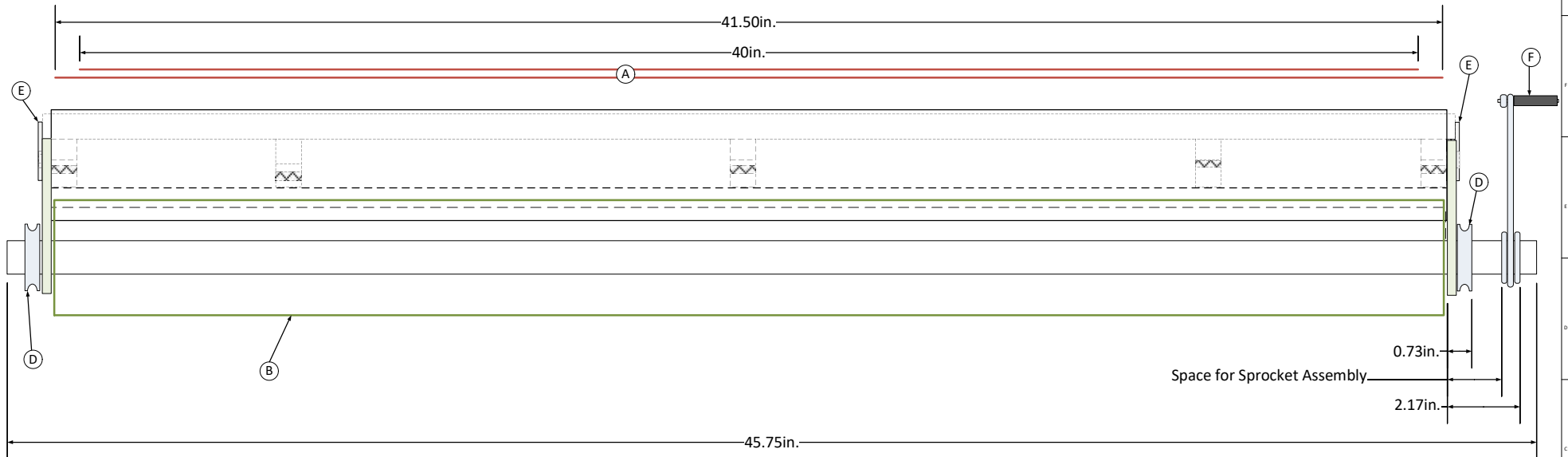
Draft Table Oval End Caps

Side view of table and rollers. The Pivot Point is shown in the lower diagram.

REVISED	FILENAME	PAGE
7/6/2018	DRAFTTABLEMODS-2018.VSD	4 OF 6
DRAWN BY		Sheet
ALEXANDER JOHANN LEIBENGEIST		Rollers Side View (verB)

Rollers & Brackets Front View

Rollers Front View



NOTE:

Each Roller needs a fitting for the center rod to prevent it from sliding left or right and out of the Bracket Hold.
The drive chain connections will be on both left and right sides. The Crank Handle can be on one or both sides.

- (A) Drawing Belt. 40" – 41.5" wide, 92" long, cut to fit (85" +/-0.01%). Ends attaches to Spindles. Drawing paper attaches to Drawing Belt. Measurement Points (1,2,...). Specs: Clear Marine Vinyl - Flexa: 30 - 40 Gauge.
- (B) Roller for Drawing Belt and paper to travel on.
- (C) Not Shown
Roller for Drawing Belt to wrap around for uptake of belting.

- (D) Small Chain and Sprocket set to link inner Rollers.
- (E) Hand crack to attaches to Spindle axel for rolling Drawing belt up and down.
- (F) Table Pivot Point & Connection for Support



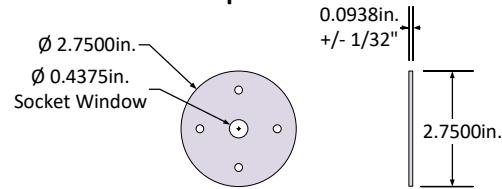
Draft Table Oval End Caps

Front View of table, rollers and end caps.

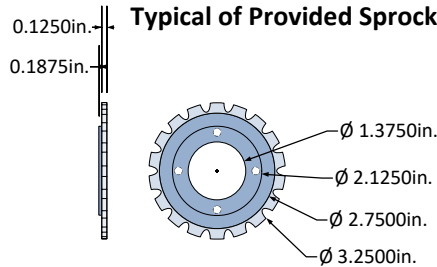
REVISED	FILENAME	PAGE
7/6/2018	DRAFTTABLEMODS-2018.VSD	5 OF 6
DRAWN BY ALEXANDER JOHANN LEIBENGEIST		Sheet Rollers Front View

Sprocket Drive Attachments

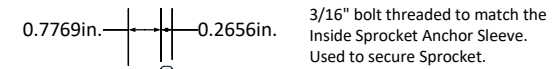
Outside Anchor Cap



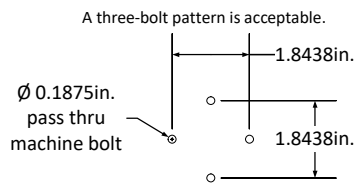
Typical of Provided Sprockets



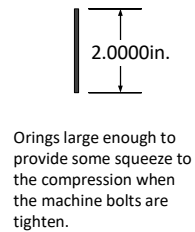
Machine Bolt



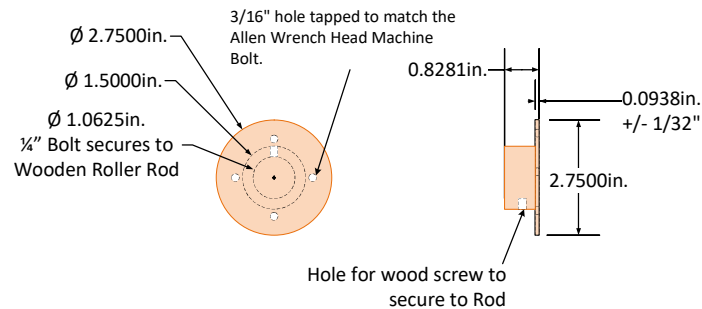
Pass Thru bolt hole spacing



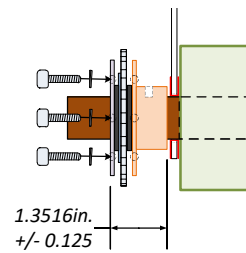
Rubber O-Ring



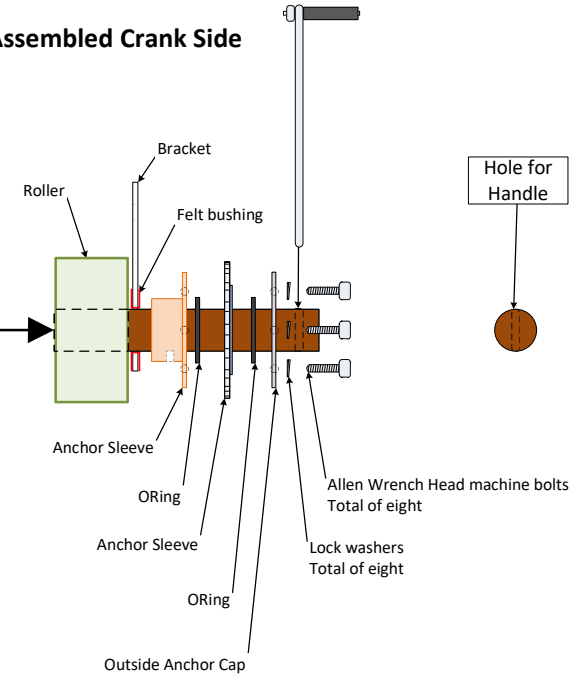
Inside Sprocket Anchor Sleeve



Assembled without Crank



Assembled Crank Side



TOTAL FOR ALL FOUR ROLLERS

- | Qty. | Items EACH |
|------|--|
| 4 | Inside Sprocket Anchor Sleeve |
| 4 | 3/4" #10-12 wood screw for Anchor Sleeve |
| 16 | O-Rings |
| 4 | Sprockets |
| 2 | Chain linkage for sprockets |
| 4 | Outside Anchor Cap (tapped) |
| 16 | 3/16" x 3 / 4" machine bolt, Alan Wrench Head |
| 16 | Lock Washers |
| 8 | Felt strip for bushing |
| 8 | Bracket support |
| 2 | Hand cranks and attachments. Optional for opposite side. |



Draft Table Oval End Caps

Attachment of Sprocket and hand crank to Rollers.

REVISED	FILENAME	PAGE
7/6/2018	DRAFTTABLEMODS-2018.VSD	6 OF 6
DRAWN BY	Sheet	
ALEXANDER JOHANN LEIBENGEIST	Sprocket Drive (b)	